

Drawing No. 1. Elevation of the front of the residence.  
 (See opposite page of this drawing.)

See opposite page



See opposite page



See opposite page



Modeling the effects of...

Modeling the effects of...



Figure 1. Model



Fig. 1. (a)

Fig. 1. (b)

Fig. 1. (c)

Fig. 1. (d)

Fig. 1. (e)

Fig. 1. (f)

Fig. 1. (g)

Fig. 1. (h)

Fig. 1. (i)



Fig. 1. (j)

Fig. 1. (k)

# Walden at Millbrook, N.Y. - Remodeled House

Plan of second floor of Millbrook, N.Y.

Scale 1/4" = 1'-0"



Walden at Millbrook, N.Y. - Remodeled House  
 Plan of second floor of Millbrook, N.Y.  
 Scale 1/4" = 1'-0"

Architectural Record, N.Y.C. 1914

RIKING TILL BÖRNQVÄRDET AF TRÄ  
FÖR TERTEN 1894 VID PARADISEN I GÅRDEN 1894 LÅSEN

Teckning af Rikingshuset



Teckning af Rikingshuset  
För Terten 1894  
Vid Paradisen i Gården 1894  
Låsen

Teckning af Rikingshuset  
För Terten 1894  
Vid Paradisen i Gården 1894  
Låsen

# Mathematics

Worked Example 1

Find the perimeter of the rectangle below.



Find the perimeter.



Find the perimeter.



Worked Example 2

Find the perimeter of the rectangle below.

# STUDY THE CONCEPTS OF THE THE THEORY OF THE CONCEPTS OF THE

The following



The following

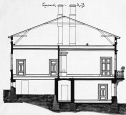


RIKNING TILL BONDGÅRDEN AF TRÄ  
FÖR TONDE 14 MED FÖRSTÄDAN I GÅRDEN 1400 LÅSEN



Öppning 14-15

Öppning 14-15



0 1 2 3 4 5 6 7 8 9 10

Malinholmen arkiv 10



Section A-A



Plan of building



# SECTION A-A

1. Section A-A is a cross-section of the building showing the foundation, walls, floor, and roof.

2. The foundation is shown below the ground level and is made of concrete.

3. The walls are made of brick and are shown in cross-section.

4. The floor is made of concrete and is shown in cross-section.

5. The roof is made of wood and is shown in cross-section.



# 











**RECORD THE MEASUREMENTS OF THE  
ART OBJECTS & THEIR SPACES. RECORD IN THE  
LARGE MEASUREMENT BOOK**

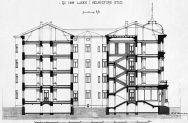


**Draw Space 12. 1' x 1'.**



TEKNOLOGIEN I BYGGERIET OG I TILBEJEGNINGEN  
 I DE LÆRE OG I HJELPERNE.

1894.





# THE NEW YORK STATE DEPARTMENT OF EDUCATION OFFICE OF GENERAL SERVICES 125 SOUTH STREET ALBANY, NEW YORK 12242

THE NEW YORK STATE DEPARTMENT OF EDUCATION



THE NEW YORK STATE DEPARTMENT OF EDUCATION  
 OFFICE OF GENERAL SERVICES  
 125 SOUTH STREET  
 ALBANY, NEW YORK 12242

FIGURE 11.1.1. A FLOOR PLAN OF A HOUSE  
 (A) A FLOOR PLAN OF A HOUSE  
 (B) A FLOOR PLAN OF A HOUSE



# ATTENTION: ALL PERSONNEL ARE NOTIFIED

FOR OFFICIALS & PERSONS IN THE PROPERTY, ON THE

PROPERTY (LAW) RELATIONSHIP (LAW)

Page 2 of 2



# Architectural drawing

Section

This section shows the building's structure, including the roof, walls, and floor. It is a cross-section of the building, showing the internal layout and the relationship between the different parts of the structure.



Section of the building showing the internal structure and the relationship between the different parts of the structure.



Section of the building showing the internal structure and the relationship between the different parts of the structure.



Section of the building showing the internal structure and the relationship between the different parts of the structure.



Section of the building showing the internal structure and the relationship between the different parts of the structure.